

1.

Operation: startNewRental(memberID : MemberID)

Cross References: Use Cases: Rent Bikes

Preconditions: None.

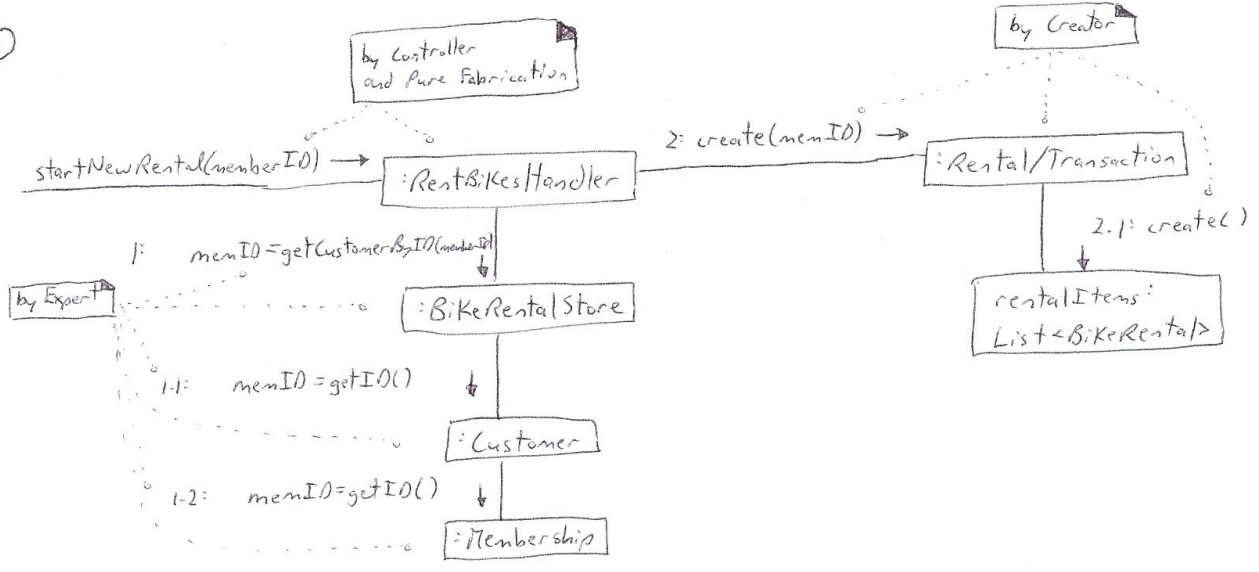
Postconditions: - A Rental/Transaction instance r was created.

- r was associated with RentBikesHandler.

- r was associated with a Customer based on memberID match.

- Attributes of r were initialized.

①



2.

Operation: enterBikeItem(itemID : ItemID, qty : Integer)

Cross References: Use Cases: Rent Bikes

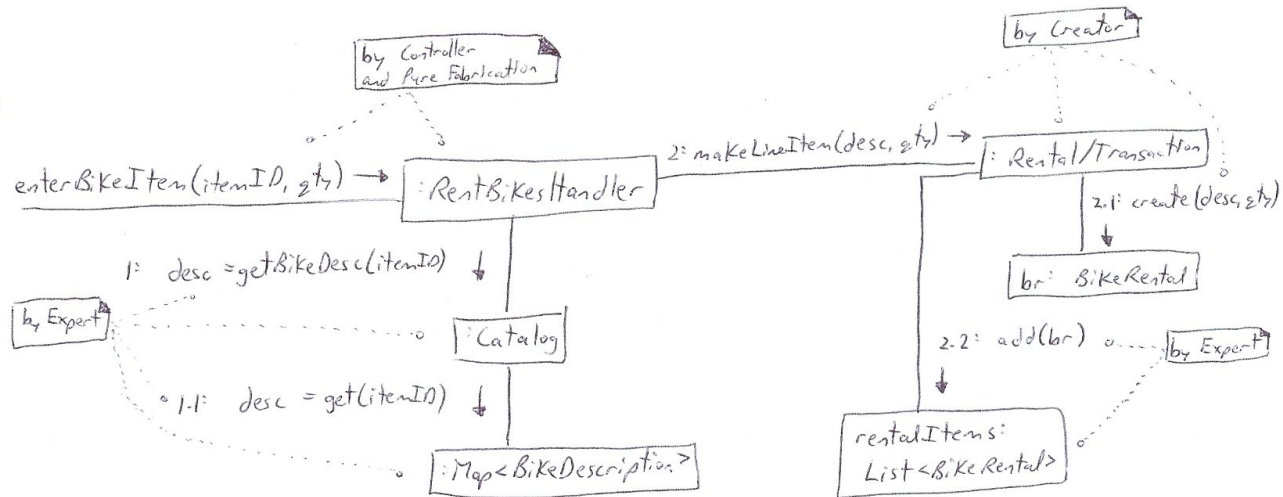
Preconditions: A Rental/Transaction is underway.

Postconditions: - A BikeRental instance br was created.

- br was associated with the current Rental/Transaction.

- br was associated with a BikeDescription based on itemID match.

②



3

