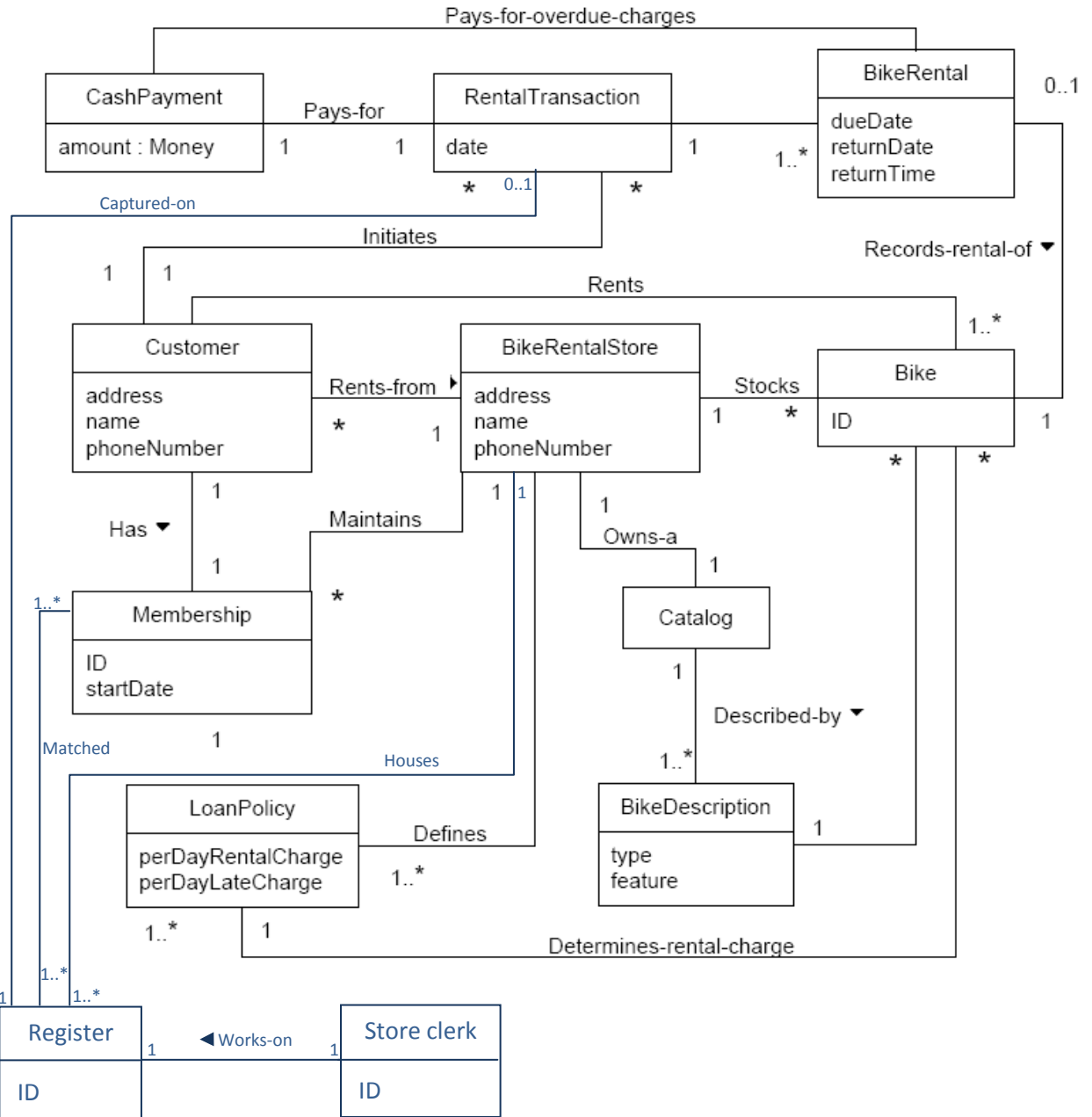


Please note that answers below for question 1,2 and 3 are based on an updated domain model as follow:



1.

### Contract CO1:startNewRental

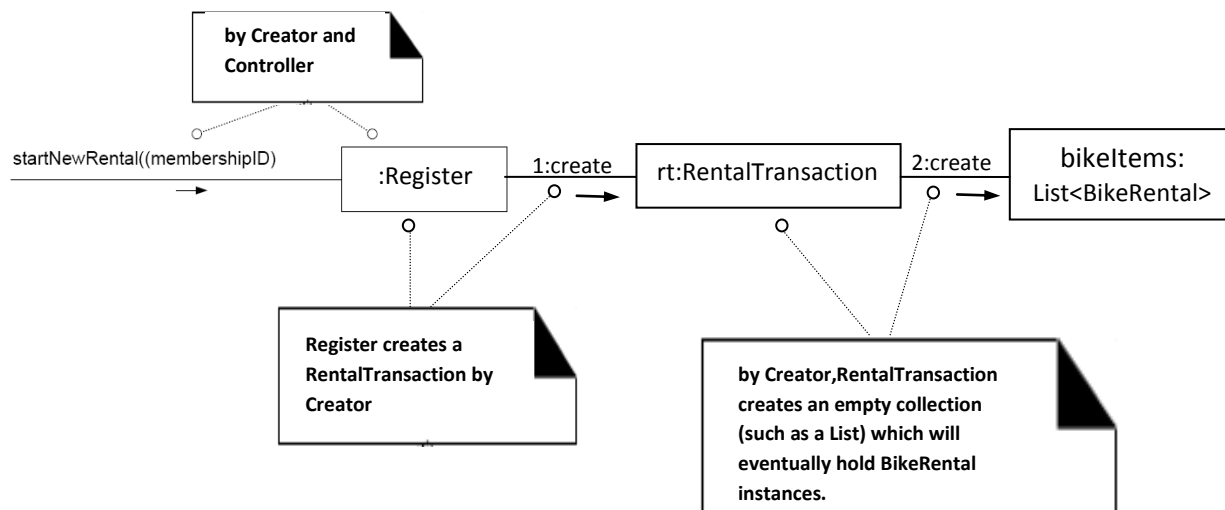
**Operation:** startNewRental(memberID: memberID)

**Cross References:** Use Cases: Rent Bikes

**Preconditions:** Customer is a member of the store.

**Postconditions:**

- A RentalTransaction instance rt was created (instance creation).
- rt was associated with a Register (association formed).
- Attribute of rt were initialized.



2.

### Contract CO2:enterBiketem

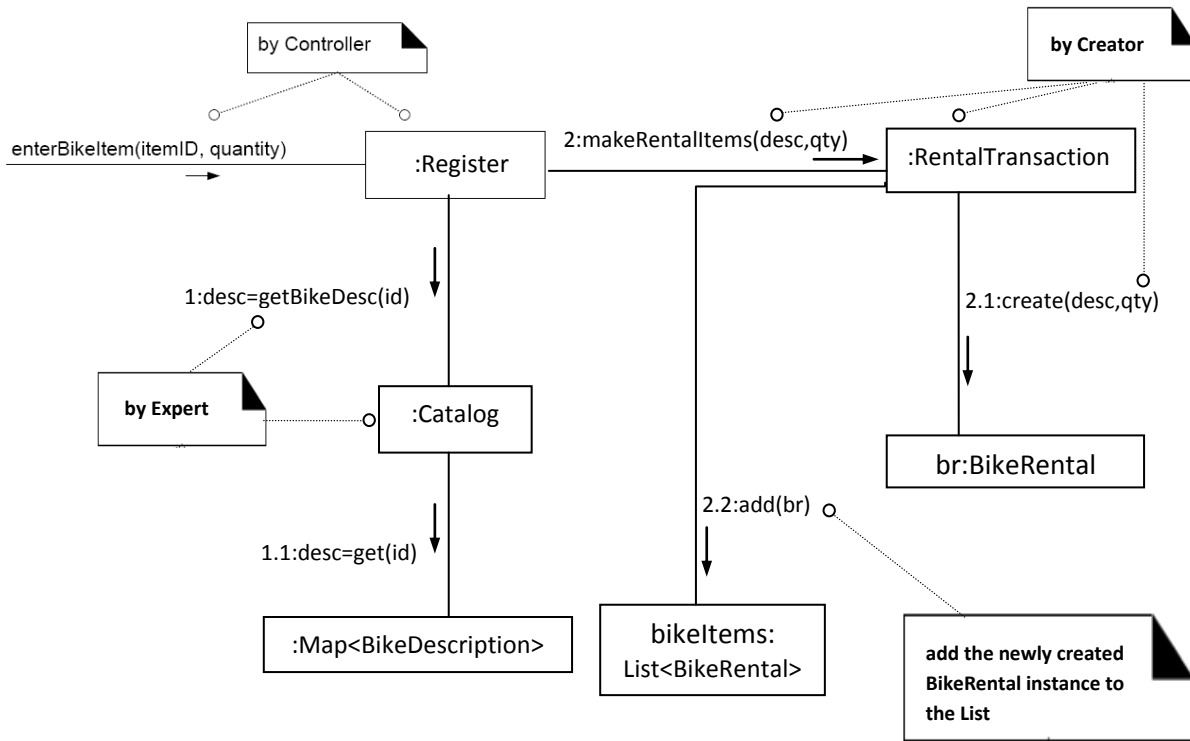
**Operation:** enterBiketem(itemID: itemID, quantity: integer)

**Cross References:** Use Cases: Rent Bikes

**Preconditions:** There is an underway rental transaction.

**Postconditions:**

- A BikeRental instance br was created (instance creation).
- br was associated with the current RentalTransaction (association formed).
- br.quantity became quantity (attribute modification).
- br.dueDate became due date (attribute modification).
- br.returnDate became return date (attribute modification).
- br.returnTime became return time (attribute modification).
- br was associated with a BikeDescription based on itemID match (association formed).



3.

